

# SonicWall™ TZ300 / TZ300 Wireless

## Quick Start Guide

Regulatory Model Numbers:

APL28-0B4 TZ300

APL28-0B5 TZ300 W



Copyright © 2017 SonicWall Inc. All rights reserved.

SonicWall is a trademark or registered trademark of SonicWall Inc. and/or its affiliates in the U.S.A. and/or other countries. All other trademarks and registered trademarks are property of their respective owners.

The information in this document is provided in connection with SonicWall Inc. and/or its affiliates' products. No license, express or implied, by estoppel or otherwise, to any intellectual property right is granted by this document or in connection with the sale of SonicWall products. EXCEPT AS SET FORTH IN THE TERMS AND CONDITIONS AS SPECIFIED IN THE LICENSE AGREEMENT FOR THIS PRODUCT, SONICWALL AND/OR ITS AFFILIATES ASSUME NO LIABILITY WHATSOEVER AND DISCLAIMS ANY EXPRESS, IMPLIED OR STATUTORY WARRANTY RELATING TO ITS PRODUCTS INCLUDING, BUT NOT LIMITED TO, THE IMPLIED WARRANTY OF MERCHANTABILITY, FITNESS FOR A PARTICULAR PURPOSE, OR NON-INFRINGEMENT. IN NO EVENT SHALL SONICWALL AND/OR ITS AFFILIATES BE LIABLE FOR ANY DIRECT, INDIRECT, CONSEQUENTIAL, PUNITIVE, SPECIAL OR INCIDENTAL DAMAGES (INCLUDING, WITHOUT LIMITATION, DAMAGES FOR LOSS OF PROFITS, BUSINESS INTERRUPTION OR LOSS OF INFORMATION) ARISING OUT OF THE USE OR INABILITY TO USE THIS DOCUMENT, EVEN IF SONICWALL AND/OR ITS AFFILIATES HAVE BEEN ADVISED OF THE POSSIBILITY OF SUCH DAMAGES. SonicWall and/or its affiliates make no representations or warranties with respect to the accuracy or completeness of the contents of this document and reserves the right to make changes to specifications and product descriptions at any time without notice. SonicWall Inc. and/or its affiliates do not make any commitment to update the information contained in this document.

For more information, visit <https://www.sonicwall.com/legal/>.

### Legend

**WARNING:** A WARNING icon indicates a potential for property damage, personal injury, or death.

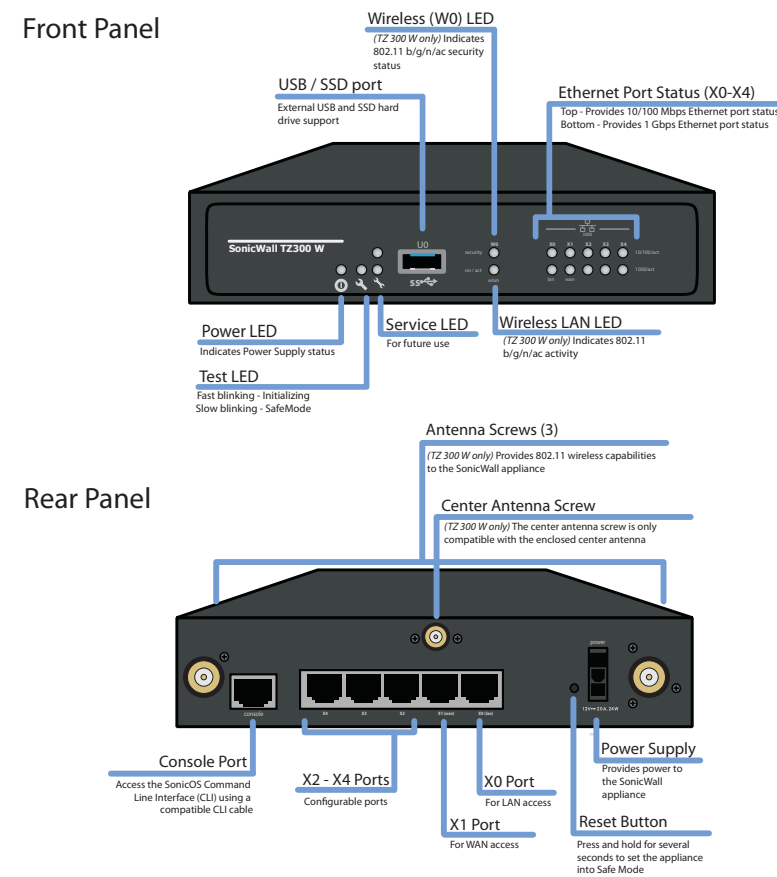
**CAUTION:** A CAUTION icon indicates potential damage to hardware or loss of data if instructions are not followed.

**IMPORTANT, NOTE, TIP, MOBILE, or VIDEO:** An information icon indicates supporting information.

TZ300 / TZ300 Wireless Quick Start Guide  
Updated - January 2017  
232-003785-50 Rev A



## 1 TZ300 / TZ300W front and rear panels



## 2 Check package contents

Verify that your package has the following contents:

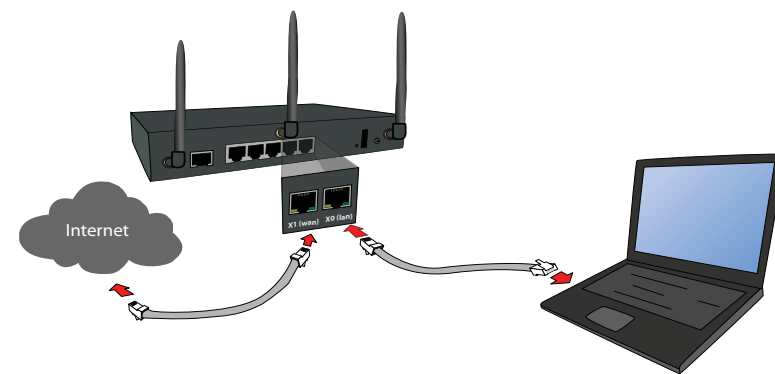
- SonicWall appliance
- Antennas (3) (TZ300 Wireless appliance only)
- Ethernet cable
- Standard power adaptor
- Standard power cord
- Quick Start Guide

**NOTE:** The included power cord is approved for use only in specific countries or regions. Before using a power cord, verify that it is rated and approved for use in your location.



## 4 Connect the interfaces

- Connect the WAN interface (X1) to your Internet connection using a standard Ethernet cable.
- Connect the LAN interface (X0) to your computer using a standard Ethernet cable.



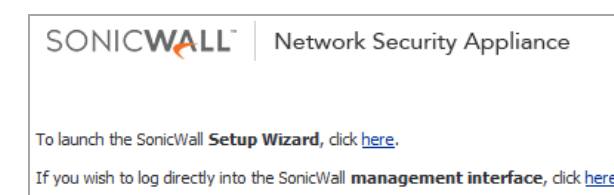
## 5 Run the Setup Wizard

- Navigate to <https://192.168.168.168> on your Web browser.

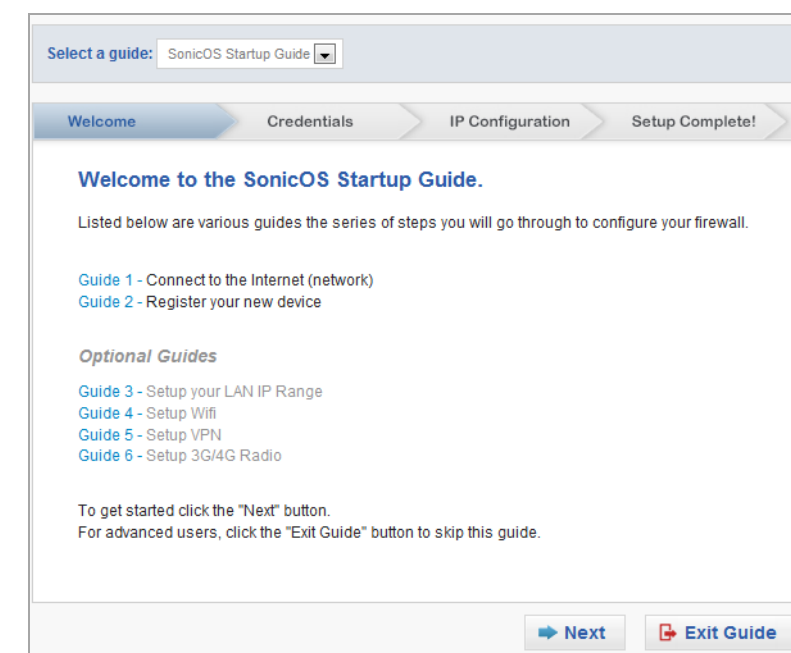


**TIP:** Your computer should be using DHCP IP addressing.

- Click on the link in “To launch the SonicWall Setup Wizard, click **here**.”



- The SonicOS Startup Guide opens.



- Click **Next** and follow the prompts in the Startup Guide pages that follow.
- Enter the TZ appliance administrator credentials to change the password, if you wish. Click **Next**.

## 3 Power on

- Connect the antennas to the appliance.
- NOTE:** The center antenna is labeled and is only compatible with the center antenna screw. (TZ300 Wireless appliance only)
- Connect the power adaptor to the appliance and to the power cable. Plug the power cable into an appropriate outlet (100-240 volts AC).



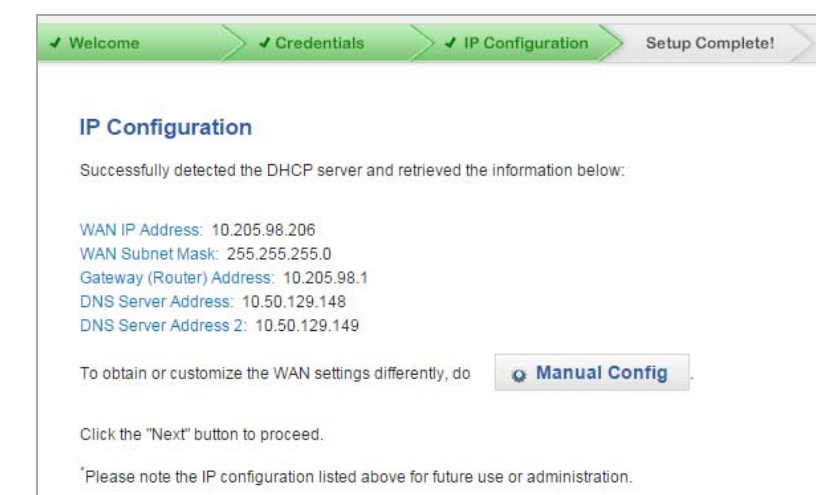
- The TZ appliance powers on, and the Test LED blinks during the boot sequence.



**CAUTION:** Only use the included power adapter with this appliance. Do not use a power adapter that is damaged or from another appliance.

**NOTE:** The default administrator credentials are **Username: admin Password: password**

- The automatic WAN IP settings are displayed. Click **Next**.



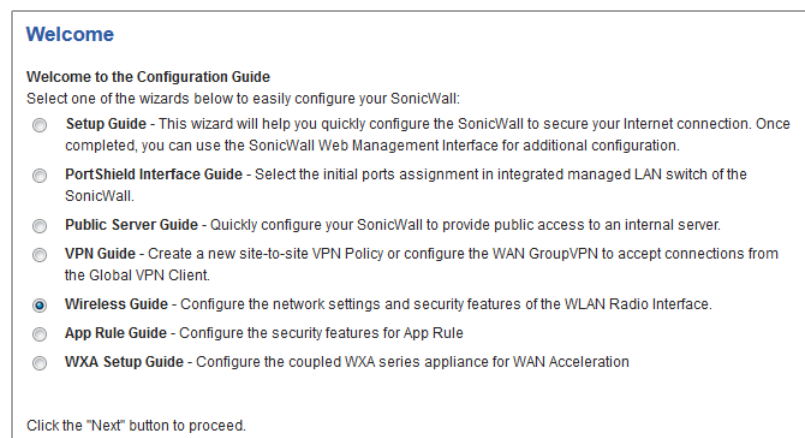
**NOTE:** For manual configuration, refer to the latest *SonicOS Administration Guide*.

- The new IP Configuration is displayed. Click **Done**.

## Configuring Wireless LAN settings

- Log in to your TZ appliance and click the **Wizards** icon.

- Select the radio button for the **Wireless Guide** wizard.



- Click **Next** and follow the prompts in the Wireless Guide wizard. For more information and complete procedures, refer to the latest *SonicOS Administration Guide*.

For international (non USA or Japan) TZ Wireless appliances, you are asked to select a country code when using the Wireless Guide or when you initially navigate to the **Wireless > Settings** page. Be sure to select the country code for the country in which the appliance will be deployed, even if you are not currently in that country.

- ① **IMPORTANT:** If you select the country code for Canada, it cannot be changed except by contacting SonicWall Support.

## 8 Mounting the TZ appliance

**⚠ WARNING: Do not mount the appliance on the ceiling, it is not designed for secure ceiling mounting.**

For optional wall mounting, you need:

- Screwdriver
- Drill with appropriate size bit
- For mounting on drywall:
  - Two #6 pan-head screws, 1 inch long (7mm diameter head, 25mm long)
  - Two wall anchors
- For mounting on solid wood or metal:
  - Two #6 pan-head wood or machine screws, 1 inch long (7mm diameter head, 25mm long)

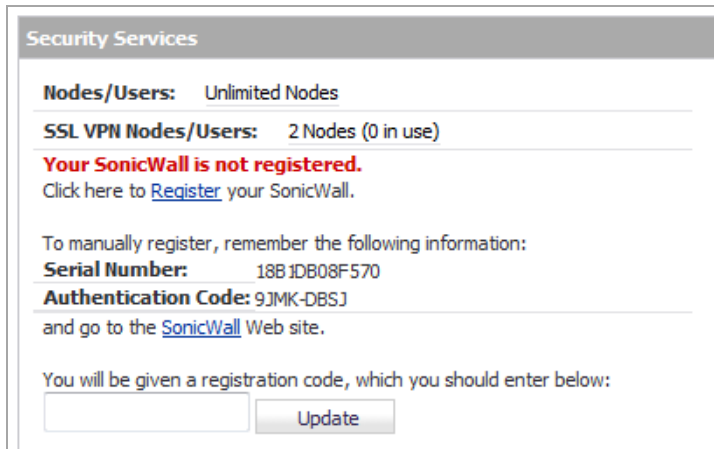
To mount the appliance on the wall:

- 1 Drill two holes 4.5 inches (11.5 cm) apart in the wall where you want to mount the appliance.
- 2 If using wall anchors, insert a wall anchor into each hole.
- 3 Insert a screw into each wall anchor (into each hole if not using wall anchors), leaving 3/16 inches (0.45 cm) of the screws exposed (including screw head).
- 4 Position the appliance mounting slots over the screws and press in and down until the appliance is securely mounted.

## 6 Register product

- Point your browser to the appliance LAN IP address (default <https://192.168.168.168>) and log in using the administrator credentials.

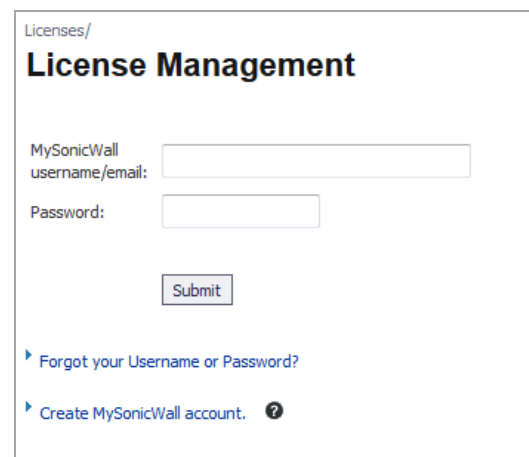
- Click **Register** on the **System > Status** page under the Security Services section.



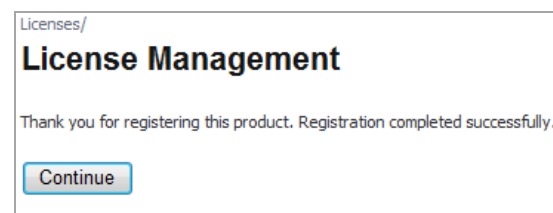
- ① **TIP:** Registering the appliance from SonicOS requires that DNS Server settings are configured on the WAN (X1) interface.

- Log in using your MySonicWall account name and password. If you do not have a MySonicWall account,

click the **Create MySonicWall account** link to create an account.



- MySonicWall directly obtains the necessary information from the TZ appliance. When finished, you will see a message that registration has been completed. Click **Continue**.



- ① **NOTE:** Your appliance must be registered to download the latest firmware.

## 9 Safety and regulatory information

**⚠ WARNING: For your safety, follow all instructions listed in this section.**

### Installing the appliance

Install in a location away from direct sunlight and sources of heat. A maximum ambient temperature of 104° F (40° C) is recommended.

Route cables away from power lines, fluorescent lighting fixtures, and sources of noise such as radios, transmitters, and broadband amplifiers.

The included power cord(s) are approved for use only in specific countries or regions. Before using a power cord, verify that it is rated and approved for use in your location.

Ensure that no water or excessive moisture can enter the unit.

Allow unrestricted airflow around the unit and through the vents on the side of the unit. A minimum of 1 inch (25.44mm) clearance is recommended.

Consideration must be given to the connection of the equipment to the supply circuit. Appropriate consideration of equipment nameplate ratings must be used when addressing this concern. Do not overload the circuit.

This equipment is not intended for use at workplaces with visual display units, in accordance with §2 of the German ordinance for workplaces with visual display units. To avoid incommoding reflections at visual display workplaces this device must not be placed in the direct field of view.

### Lithium battery warning

The Lithium Battery used in the SonicWall security appliance may not be replaced by the user. Return the SonicWall security appliance to a SonicWall-authorized service center for replacement with the same or equivalent type recommended by the manufacturer. If, for any reason, the battery or SonicWall security appliance must be disposed of, do so following the battery manufacturer's instructions.

### Cable connections

All Ethernet and RS232 (Console) cables are designed for intra-building connection to other equipment. Do not connect these ports directly to communication wiring or other wiring that exits the building where the SonicWall appliance is located.

### Power supply information

If the power supply is missing from your SonicWall product package, please contact SonicWall Technical Support at <https://support.sonicwall.com/contact-support> for a replacement. This product should only be used with a UL listed power supply marked "I.T.E. LPS" with an output rated 12V DC, minimum 2.0 A, Tma: minimum 40 degree C.

## EU and EFTA

This device is approved for use in EU member states and EFTA countries as shown on the appliance label.

**TZ300 W (RM: APL28-0B5) RF Transmitter Bands and Power**

Frequency Band MHz	Maximum Radio-Frequency Power Transmitted dBm EIRP
2412 - 2472	19.06
5180 - 5240	22.19
5260 - 5320	22.07
5500 - 5700	26.29

## Declaration of conformity

A "Declaration of Conformity" in accordance with the directives and standards has been made and is on file at SonicWall International Limited, City Gate Park, Mahon, Cork, Ireland.

CE declarations can be found online at <https://support.sonicwall.com>.

- ① **NOTE:** Additional regulatory notifications and information for this product can be found online at <https://support.sonicwall.com>.

## 台灣 RoHS

限用物質含有情況標示資訊請參考下列網址：<https://support.sonicwall.com>.

操作說明：

- 輸入產品型號並搜尋
- 選擇 Technical Documentation
- 選擇 Safety and Regulatory Reference Guide
- Download this document 下載此文件

## Verwarnung Weitere hinweise zur montage

Wählen Sie für die Montage einen Ort, der keinem direkten Sonnenlicht ausgesetzt ist und sich nicht in der Nähe von Wärmequellen befindet. Die Umgebungstemperatur darf nicht mehr als 40 °C betragen.

Führen Sie die Kabel nicht entlang von Stromleitungen, Leuchtstoffröhren und Störquellen wie Funksendern oder Breitbandverstärkern.

Das im Lieferumfang enthaltene bzw. die im Lieferumfang enthaltenen Netzkabel sind nur

## 7 Get the latest firmware

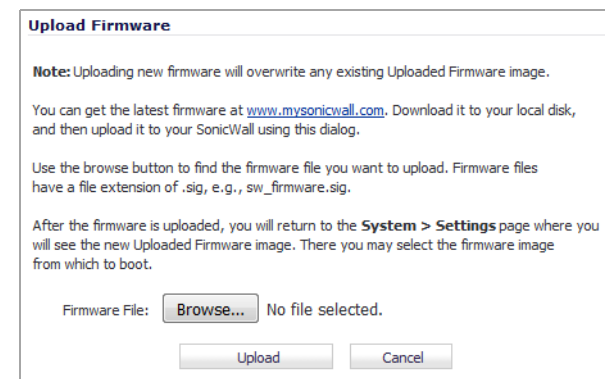
- In a Web browser, navigate to <http://www.mysonicwall.com>

- Click **Downloads** and select **TZ300** or **TZ300 W Firmware** from the **Software Type** drop-down menu.

- Click the link for the firmware you want and save the file to a location on your computer.

- On the TZ appliance, navigate to the **System > Settings** page. Click the **Upload New Firmware** button.

- Click the **Browse** button to select the firmware you just downloaded.



- Click **Upload** and wait for the upload to complete.

- In the **Firmware Management Table**, click the **Boot** icon for your new firmware.

für die Verwendung in bestimmten Ländern und Regionen zugelassen. Überprüfen Sie bitte vor der Verwendung eines Netzkabels, ob es für die Verwendung in Ihrem Land oder Ihrer Region zugelassen ist und den geforderten Normen entspricht.

Stellen Sie sicher, dass das Gerät vor Wasser und hoher Luftfeuchtigkeit geschützt ist.

Stellen Sie sicher, dass die Luft um das Gerät herum zirkulieren kann und die Lüftungsschlitze an der Seite des Gehäuses frei sind. Hier ist ein Belüftungsabstand von mindestens 26 mm einzuhalten.

Prüfen Sie den Anschluss des Geräts an die Stromversorgung, damit der Überstromschutz sowie die elektrische Leitung nicht von einer eventuellen Überlastung der Stromversorgung beeinflusst werden. Prüfen Sie dabei sorgfältig die Angaben auf dem Aufkleber des Geräts. Überlasten Sie nicht den Stromkreis.

Dieses Gerät ist nicht zur Verwendung an Arbeitsplätzen mit visuellen Anzeigegeräten gemäß § 2 der deutschen Verordnung für Arbeitsplätze mit visuellen Anzeigegeräten vorgesehen. Um störende Reflexionen am Bildschirmarbeitsplatz zu vermeiden, darf dieses Produkt nicht im unmittelbaren Gesichtsfeld platziert werden.

### Verwarnung hinweis zur lithiumbatterie

Die in der Internet Security Appliance von SonicWall verwendete Lithiumbatterie darf nicht vom Benutzer ausgetauscht werden. Zum Austauschen der Batterie muss die SonicWall in ein von SonicWall autorisiertes Service-Center gebracht werden. Dort wird die Batterie durch denselben oder entsprechenden, vom Hersteller empfohlenen Batterietyp ersetzt. Beachten Sie bei einer Entsorgung der Batterie oder der SonicWall Internet Security Appliance die diesbezüglichen Anweisungen des Herstellers.

### Verwarnung kabelverbindungen

Alle Ethernet- und RS232-C-Kabel eignen sich für die Verbindung von Geräten in Innenräumen. Schließen Sie an die Anschlüsse der SonicWall keine Kabel an, die aus dem Gebäude herausgeführt werden, in dem sich das Gerät befindet.

### Informationen zur stromversorgung

Wenn die Stromversorgung von der SonicWall-Produktpaket fehlt, wenden SonicWall den Technischen Support unter <https://support.sonicwall.com/contact-support>.

Dieses Produkt sollte nur mit einem für den Europäischen Markt genehmigten Netzteil mit dem Logo "I.T.E. LPS" und einer Ausgangsleistung von 12 VDC, mind. 2.0 A, Tma: mind. 40 Grad C, betrieben werden.